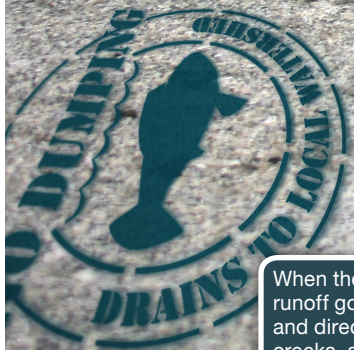


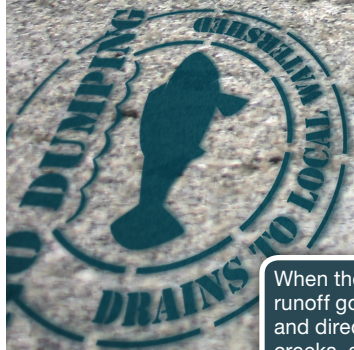
# Not Rain? No Drain!



When there's heavy rain, the runoff goes down the storm drain and directly into our rivers, lakes, creeks, and other local water bodies. That includes pollutants on the ground plus those people may unfortunately allow to flow down storm drains like oil, paint, grass clippings, and trash. Rain is the only thing that belongs in a storm drain.

**If you don't want it in your water, keep it out of the storm drain!**

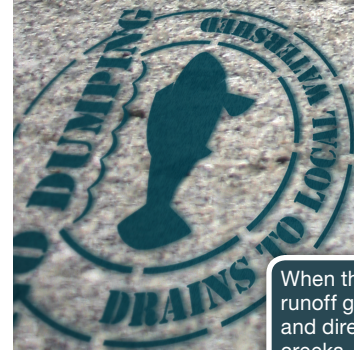
# Not Rain? No Drain!



When there's heavy rain, the runoff goes down the storm drain and directly into our rivers, lakes, creeks, and other local water bodies. That includes pollutants on the ground plus those people may unfortunately allow to flow down storm drains like oil, paint, grass clippings, and trash. Rain is the only thing that belongs in a storm drain.

**If you don't want it in your water, keep it out of the storm drain!**

# Not Rain? No Drain!



When there's heavy rain, the runoff goes down the storm drain and directly into our rivers, lakes, creeks, and other local water bodies. That includes pollutants on the ground plus those people may unfortunately allow to flow down storm drains like oil, paint, grass clippings, and trash. Rain is the only thing that belongs in a storm drain.

**If you don't want it in your water, keep it out of the storm drain!**