



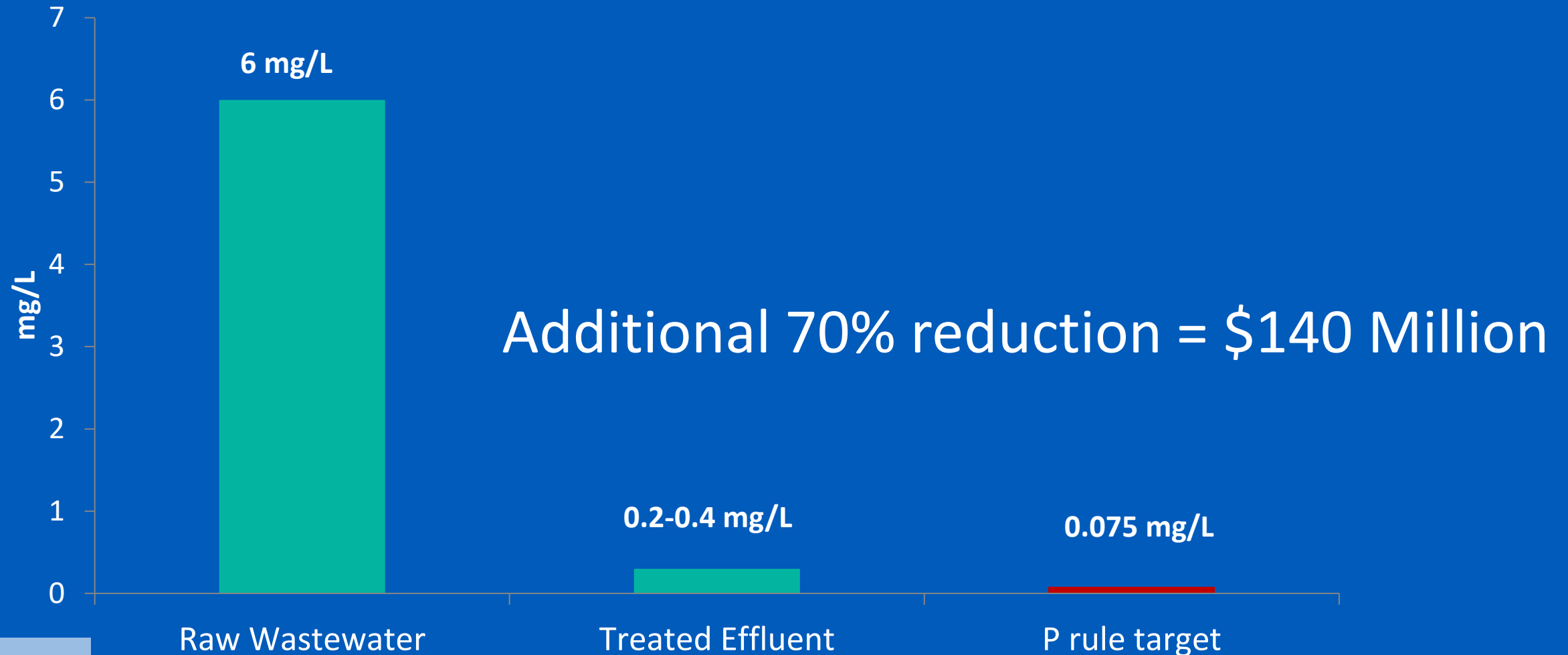
# About the District

- Serve more than 435,000 people in 24 communities in 190 square miles
- Own 18 pumping stations and maintains 47 other pumping stations and 150 miles of pipe
- Recover 14 billion gallons of water and 37 million gallons of biosolids yearly
- Operate around the clock, 365 days a year



# Phosphorus Reductions Are Necessary

Average Phosphorus Concentrations in Wastewater at Nine Springs Plant



# Watershed Opportunity

**27%**

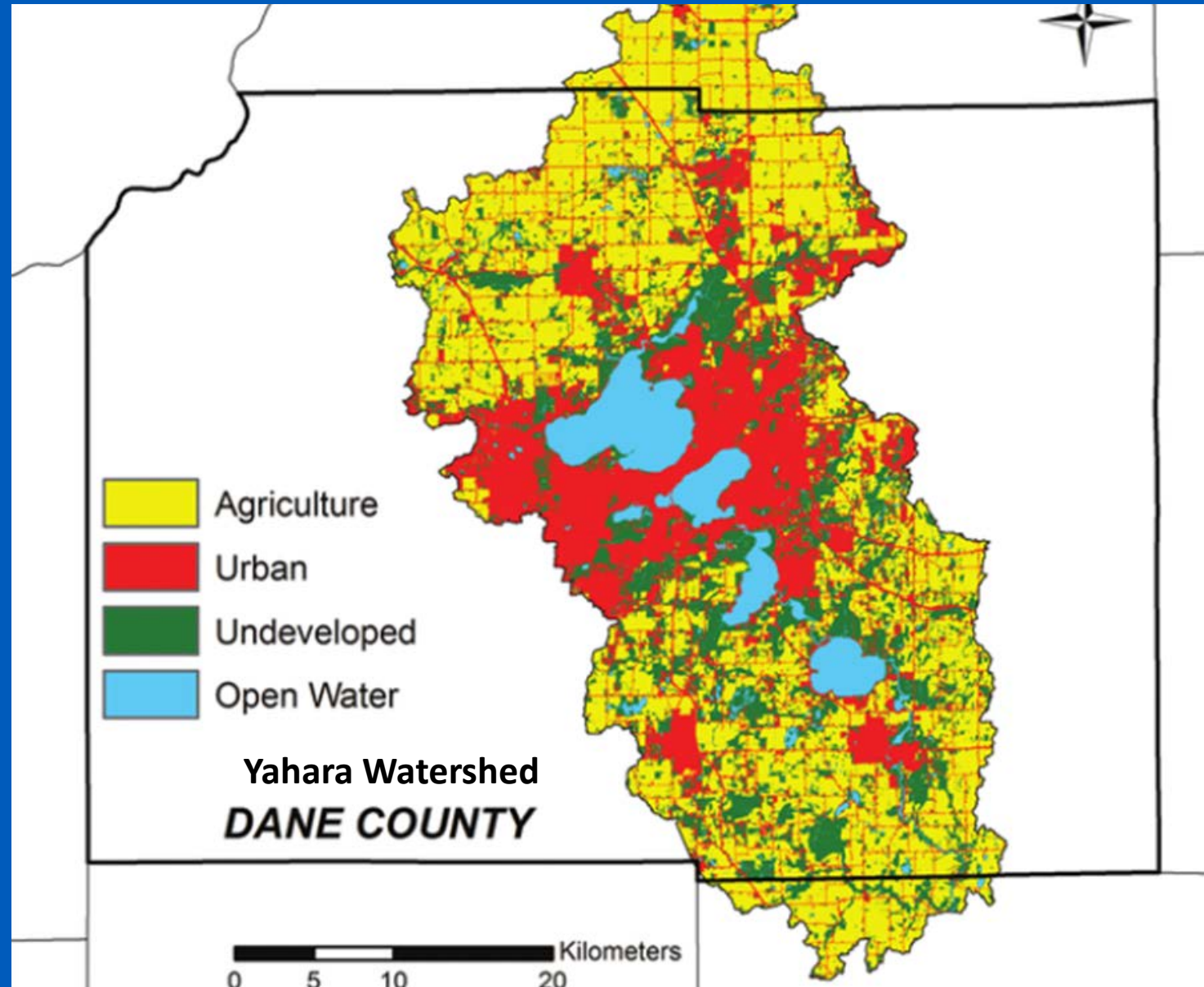
Urban

**47%**

Cropland

**19%**

Natural Vegetation



# Implementing Partner Highlights

Madison Metropolitan Sewerage District



- 31,217 lbs. of P reduction
- 29,034 acres in cropland conservation
- 78 farmers in their cost share program.
- Leveraged additional \$583,216 for implementation



- 23,218 lbs. of P reduction
- Over 60,000 ac. in Nutrient Management
- Assisted 237 landowners/producers
- Allocated over \$600,000 in cost sharing.



- Small area of the watershed (8%)
- Grassed waterways, harvestable buffers, perennial forage conversion
- Effective partner with fewer opportunities



# Partnerships





# Partnerships





# Partnerships





# Partnerships





# Partnerships







**Metrogro: Sustainable, Local Fertilizer**





# The resource cycle



# Partner Projects: Municipal

## **Municipal Biosolids Land Application**

Three Year Application Rotation

Soil Test Threshold

Phosphorus Availability Data

## **Low Disturbance Injection**

Over ½ pound per acre reduction in Phosphorus loss

## **Alternative Biosolids Products**



Madison Metropolitan Sewerage District



# Partner Projects: Agricultural

## Composting Evaluation

Nutrient Availability

Soil Health Impacts

## Side by Side Comparison of Mixes

Dairy Manure

Dairy Manure Compost

Biosolids Cake

Biosolids Compost



Extension

UNIVERSITY OF WISCONSIN-MADISON

Madison Metropolitan Sewerage District

